



Guide

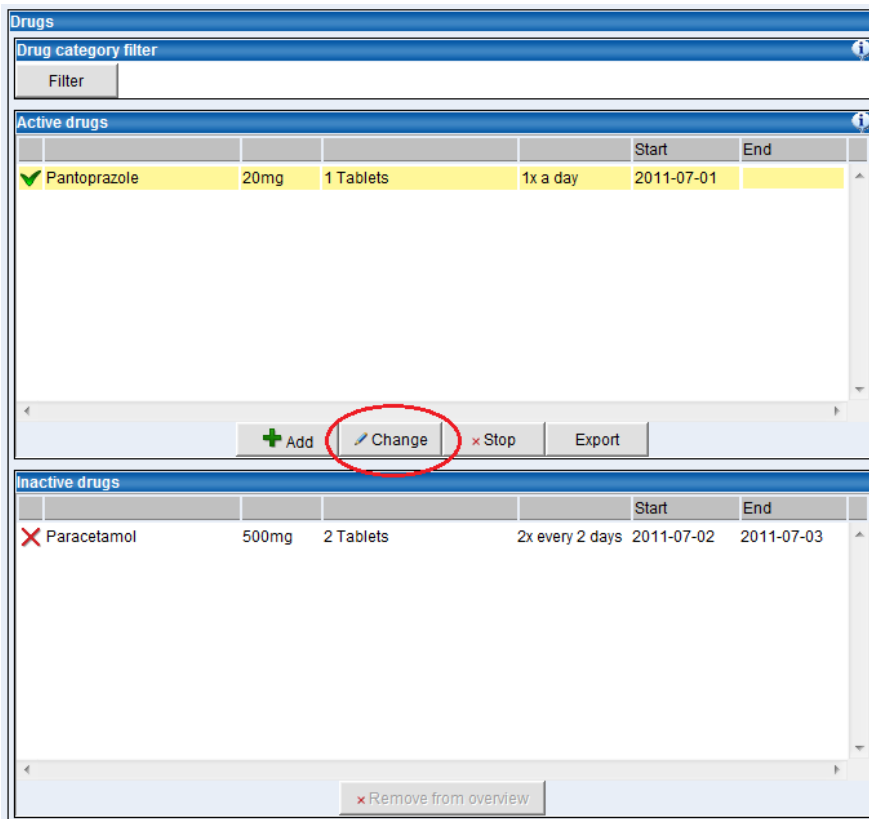
Release August 2013

Contents

1. Drug module	3
Change	3
Stop	5
Tapering dose	5
2. RAPID3 score added in HAQ module.	7
Language preference	8
3. Missing patient data.....	9
4. New patient.....	10
5. Display activated pointer.	11
6. METEOR session closed.....	12

1. Drug module

The functionality of the “Change” button and “Stop” button has been changed.



Change

Change will cause the following 2 actions:

1. The previous drug prescription will be moved to the inactive drug overview
2. The newly prescribed dosage will appear in the active drug overview

Note: the start date will automatically be updated to current date and can be changed.

This new start date will be the end date of the previous drug.

Active drugs					
				Start	End
✓	Pantoprazole	20mg	1 Tablets	2x a day	2013-08-08

Inactive drugs					
				Start	End
✗	Paracetamol	500mg	2 Tablets	2x every 2 days	2011-07-02 2011-07-03
✗	Pantoprazole	20mg	1 Tablets	1x a day	2011-07-01 2013-08-07

The “change” button will enable you to change the following items:

1. How many
2. Administered/Taken
3. Every
4. Start date
5. End date
6. Not in overview
7. Reason

Change prescribed medicine

Drug type:

Drug package:

How many: Tablets

Of what dose: mg

Administered/Taken: times every Day(s)

Start date:

End date:

Avg. dose/day: mg

Not In Overview

Reason:

Pantoprazole 20mg 1 Tablets 1x a day from: 2013-08-08 until:

Stop

The Stop button will enable you to enter the following items:

1. End date
2. Not in overview
3. Reason

The 'Stop drug' dialog box is shown with the following fields and values:

- Drug type: Pantoprazole
- Drug package: 20mg Tablets
- How many: 1 Tablets
- Of what dose: 20 mg
- Administered/Taken: 2 times every 1 Day(s)
- Start date: 2013-08-08
- End date: yyyy-mm-dd (circled in red)
- Avg. dose/day: 40 mg
- Not In Overview: (circled in red)
- Reason: (empty dropdown menu, circled in red)

A summary bar at the bottom reads: **Pantoprazole 20mg 1 Tablets 2x a day from: 2013-08-08 until:**

Buttons: Save, Cancel

Tapering dose

It is easier to prescribe a tapering dose for Prednisone and Prednisolone by selecting taper dosage in the drug package.

The 'Prescribe medicine' dialog box is shown with the following fields and values:

- Drug type: Prednisone
- Drug package: 1mg Tablets (dropdown menu)
- How many: 1mg Tablets, 2.5mg Tablets, 10mg Tablets, 20mg Tablets, 5mg Tablets (dropdown menu)
- Of what dose: (dropdown menu)
- Administered/Taken: (dropdown menu)
- Start date: Taper dosage (circled in red)
- End date: yyyy-mm-dd
- Avg. dose/day: mg
- Not In Overview:

A summary bar at the bottom reads: **Prednisone 1mg Tablets x from: 2013-08-08 until:**

Buttons: Save, Cancel

The following screen will appear in which you can enter the amount of mg/day, number of days and start date.

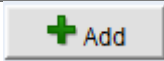
Prescribe medicine

Drug type

Drug package

#mg/day	Duration		Start date
<input type="text" value="20"/>	<input type="text" value="7"/>	Day(s) ▾	<input type="text" value="2013-08-08"/>
<input type="text" value="15"/>	<input type="text" value="7"/>	Day(s) ▾	<input type="text" value="2013-08-15"/>
<input type="text" value="10"/>	<input type="text"/>	Day(s) ▾	<input type="text" value="2013-08-22"/>
<input type="text"/>	<input type="text"/>	Day(s) ▾	<input type="text"/>
<input type="text"/>	<input type="text"/>	Day(s) ▾	<input type="text"/>
<input type="text"/>	<input type="text"/>	Day(s) ▾	<input type="text"/>

To add more rows click



2. RAPID3 score added in HAQ module.


The HAQ questionnaire has been extended with 2 questions in order to calculate a RAPID3 score.

RAPID3 (Routine Assessment of Patient Index Data 3) includes a subset of the following parameters:

1. Physical function
2. PAIN
3. Patient global assessment

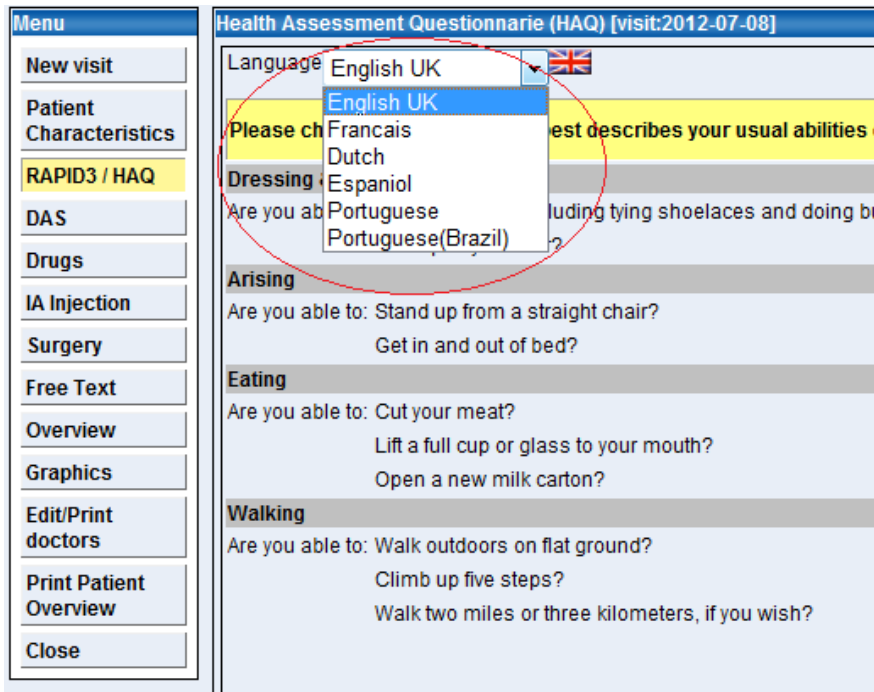
RAPID3 score will be displayed in the overview and in the DAS and HAQ statistics reports.

Overview	
Patient history	
Year	2009
Month-Date	09-04
DAS(3)	
DAS(4)	
DAS28(3)	1.82
DAS28(4)	
SDAI	3.80
CDAI	3.10
CRP	7.0
ESR	6
HAQ	0.38
RAPID3	3.7

Result				
				
DAS HAQ Statistics Report				
Scope:	testsite			
Patients with a visit from:	2012-08-08			
Until:	2013-08-08			
Gender:	No restriction			
Age group:	No restriction			
Disease duration:	No restriction			
Erosions:	No restriction			
RF:	No restriction			
aCCP:	No restriction			
	Number of patients	Average	SD	Range
DAS28 (3)	2	3.3	1.5	2.2 - 4.3
DAS28 (4)	2	3.8	1.4	2.7 - 4.8
DAS (3)	2	2.3	0.6	1.8 - 2.7
DAS (4)	2	2.5	0.7	2.0 - 3.0
CDAI	2	16.3	3.0	14.2 - 18.4
SDAI	1	14.7	0.0	14.7 - 14.7
Pain	2	65.5	6.4	61.0 - 70.0
Patient global	2	62.0	4.2	59.0 - 65.0
Physician global	2	66.0	4.2	63.0 - 69.0
CRP	1	5.0	0.0	5.0 - 5.0
ESR	2	19.5	20.5	5.0 - 34.0
HAQ	1	1.4	0.0	1.4 - 1.4
RAPID3	0	0.0	0.0	0.0 - 0.0

Language preference

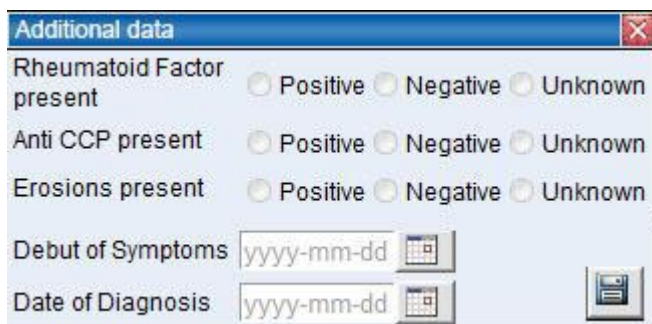
In RAPID3/HAQ module it is possible to select a different language than the one selected by the user. The questions will immediately be displayed in the newly selected language.






The screenshot displays the 'Health Assessment Questionnaire (HAQ) [visit:2012-07-08]' interface. On the left is a 'Menu' sidebar with options: New visit, Patient Characteristics, RAPID3 / HAQ (highlighted), DAS, Drugs, IA Injection, Surgery, Free Text, Overview, Graphics, Edit/Print doctors, Print Patient Overview, and Close. The main content area shows a 'Language' dropdown menu currently set to 'English UK' with a UK flag icon. A red circle highlights the dropdown menu, which is open to show the following options: English UK, Francais, Dutch, Espaniol, Portuguese, and Portuguese(Brazil). Below the menu, the questionnaire content is visible, including sections for 'Dressing', 'Arising', 'Eating', and 'Walking', each with specific questions and instructions.

3. Missing patient data

User will be asked to enter patient data in case data are missing.
The following pop up will appear when closing a patient file.



The image shows a software dialog box titled "Additional data" with a close button in the top right corner. It contains the following fields:

- Rheumatoid Factor present: Positive Negative Unknown
- Anti CCP present: Positive Negative Unknown
- Erosions present: Positive Negative Unknown
- Debut of Symptoms: 
- Date of Diagnosis:  

4. New patient

With each newly entered patient the system requires a visit date in order to activate the rest of the items in the menu.

Menu	Patient Characteristics
New visit	Patient Card
Patient Characteristics	PinCode * 324531
RAPID3 / HAQ	Identifier * 324531
DAS	Rheumatologist * test123
Drugs	Lastname Test
IA Injection	Firstname Bob
Surgery	Sex male
Free Text	Birthday 1962-01-17
Overview	Street
Graphics	Zip Code
Edit/Print doctors	City
Print Patient Overview	Country
Close	Telephone
	Email
	Patient login details

5. Display activated pointer.

The default position of the pointer in the visual analogue scale is at 5.

Up till now it was not clear if the pointer on the scale had been activated or not.

With the new release the end points of the pointer in starting position will be blank.

When activated the end points will turn to green.

PAIN

please enter the value, that best fits your (the patients) experience of pain due to the disease on average last week.

No Pain 0 1 2 3 4 5 6 7 8 9 10 Pain as bad as possible

6. METEOR session closed

If you left a METEOR session unattended, private information is sitting there for any passer-by to see. From now on METEOR will automatically close after 60 minutes of inactivity.